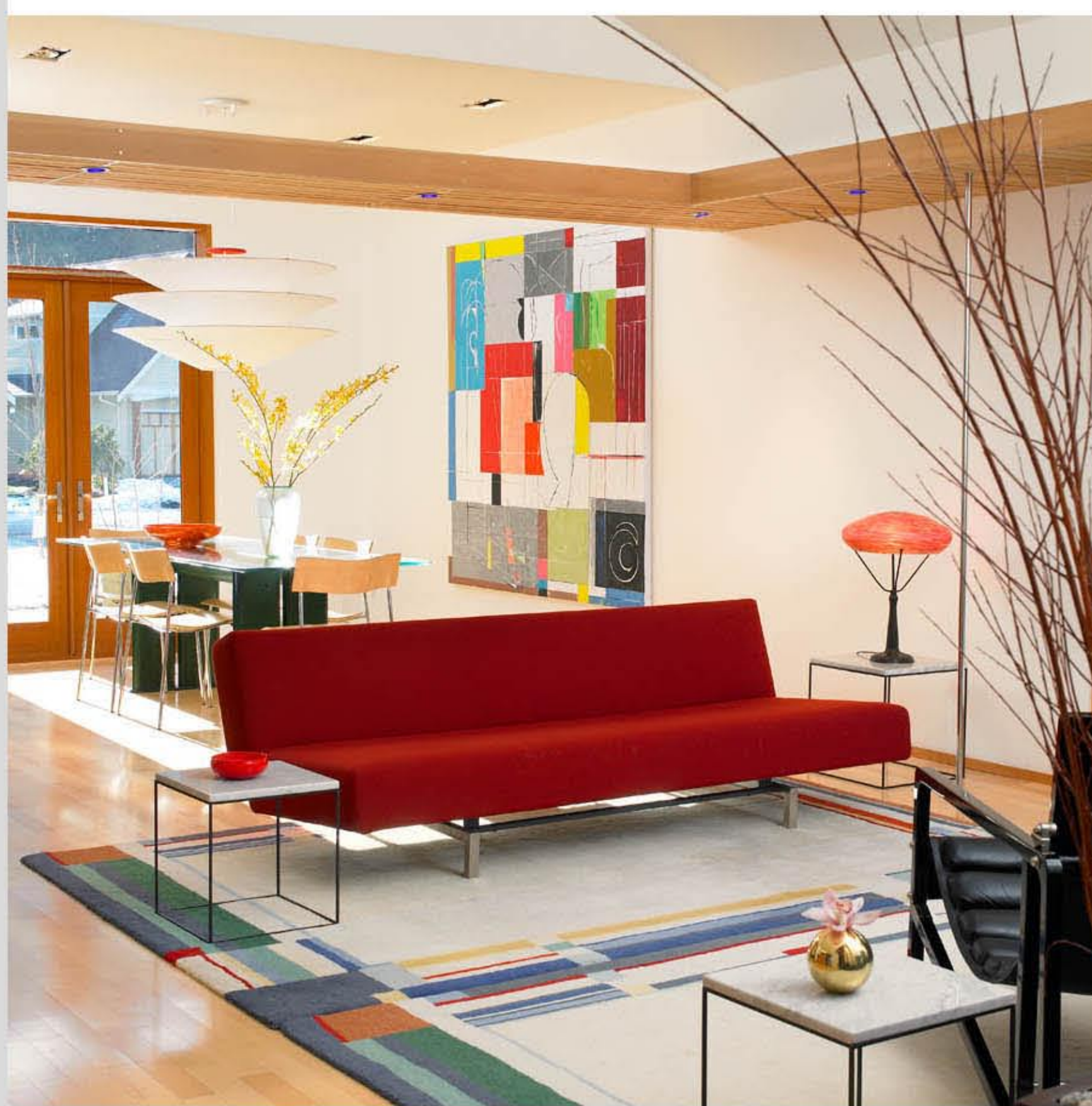
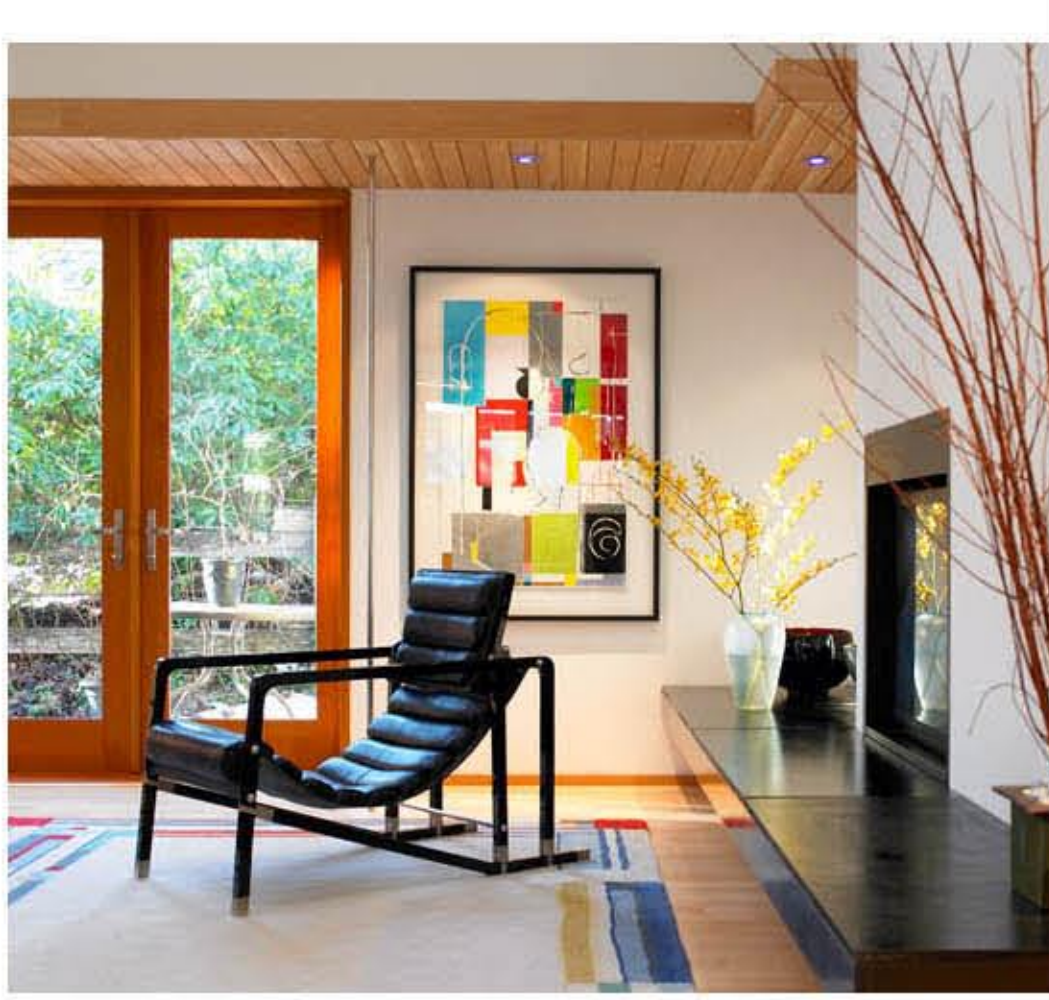


## MONOGRAM 'MUSE' SERIES

THE INITIAL PAINTING IN MY 'MONOGRAM' SERIES TITLED 'MUSE' WAS A WORK IN OIL ON ARCHES PAPER. I WAS INTRIGUED BY THE COLOUR AND THE COMPOSITION. IT HAD A VIBRANT QUALITY WHICH SUGGESTED A FRESH MODERNISM. I WAS EXCITED TO INTERPRET 'MUSE' IN A LARGER SCALE ON CANVAS. I FELT THIS WOULD EMPOWER THE COMPOSITION AND GIVE IT GREATER DEPTH. THE PLAYFULNESS WAS ACHIEVED BY UTILIZING MY TECHNIQUE OF DRAWING AND THEN PAINTING WITH PALETTE KNIVES. THE 'MUSE' HAS INSPIRED ME TO CONTINUE MY EXPLORATIONS AND DEVELOP THIS UNIQUE NEW SERIES OF ARTWORKS. THIS ADVENTURE IS ALWAYS DELIGHTFUL AS I FIND NEW RELATIONSHIPS.



'MUSE' O/C 72"X 72"

ROBLIN 2010



'NEW MUSE' A/C 79"X 54"

ROBLIN 2011



'MUSE A' A/C 54"X 79"

ROBLIN 2012



'THE MUSE' A/C 54"X 79"

ROBLIN 2012



'TANGERINE' A/C 54"X 79"

ROBLIN 2012



'INTERVIEW' A/C 52"X 78"

ROBLIN 2012



'APRES MIDI' A/C 54"X 78"

ROBLIN 2012



'THE GAZE' A/C 72"X 72"

ROBLIN 2012

